

PEAK DOT PREDOMINANT 231U



BW: 85lbs 205DWT: 684lbs 365DWT: 1118lbs



130 Big Rugged Bulls

The April 7, 2010, sale will feature 130 performance bulls from our fall program as well as a powerful set of yearling bulls from our embryo program.

PEAK DOT PREDOMINANT 213U



BW +2.2
WW +46
YW +85
MILK +19

BW: 80lbs 205DWT: 749lbs 365DWT: 1240lbs

PEAK DOT PREDOMINANT 214U



BW +1.8
WW +50
YW +87
MILK +19

BW: 78lbs 205DWT: 708lbs 365DWT: 1214lbs

PEAK DOT AUTOGRAPH 202U



BW +1.9
WW +45
YW +86
MILK +21

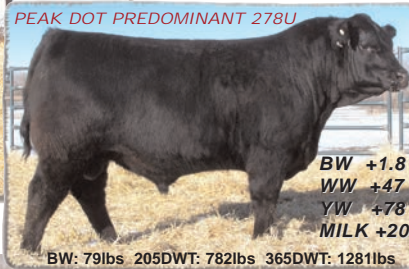
BW: 75lbs 205DWT: 748lbs 365DWT: 1306lbs

PEAK DOT PRIME CUT 254U



BW: 74lbs 205DWT: 748lbs 365DWT: 1190lbs

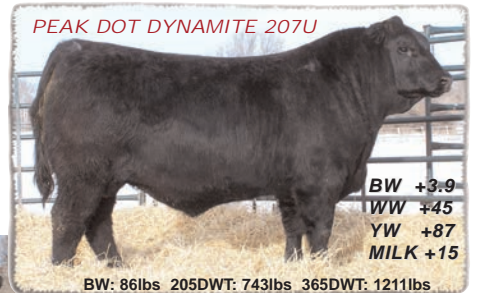
PEAK DOT PREDOMINANT 278U



BW +1.8
WW +47
YW +78
MILK +20

BW: 79lbs 205DWT: 782lbs 365DWT: 1281lbs

PEAK DOT DYNAMITE 207U



BW +3.9
WW +45
YW +87
MILK +15

BW: 86lbs 205DWT: 743lbs 365DWT: 1211lbs



Fall bulls with their added age and good rig will allow you to increase your cow per bull ratio. If your yearling bulls get to run down by the end of a breeding season, you may want your bulls with a little extra age. Whether you need a purebred herd bull or commercial range bull, this pen is for you.